

 Stacy Garcia




Lexmark
carpet mills, inc.

2010 Summer Catalog Index

1	Inspiration through Collaboration
2-3	SG325 Checkmate
4-5	SG475 Stix
6-7	SG425 Moroccan Fretwork
8-9	SG400 Cachet
10-11	SG375 Champlain
12-13	SG300 Madison
14-15	SG450 Meteorite
16-17	SG250 Siena
18-19	SG100 Essex
20	Green Story
21	Specifications List





*“Dramatic pattern excites the senses and defines a space.
This concept comes to life in my new collection for Lexmark.”*
– Stacy



SPECIFICATIONS

Style

CHECKMATE

Construction

Tufted Enhanced Loop Graphic Tip Shear

Fiber

100% C.F. Lextron Enviro Green Solution Dyed Nylon w/Lexshield® built-in Anti-microbial Protection

Gauge

1/10

Tufted Pile Weight

32oz. Per Square Yard

Finished Pile Height

.250" High .187" Medium .062" Low

Stitches Per Inch

12

Primary Backing

Woven Polypropylene

Secondary Backing

Action Bac®

Dye

Solution Dyed

Total Weight

68oz.

Width

12'

Radiant Panel

Class I

Pattern Repeat

2.25"x 2.50"



CRI GREEN LABEL PLUS INDOOR AIR QUALITY TESTING PROGRAM

Passes - Certification Number GLP 2380

Lextron Enviro Green contains 10% pre consumer recycled content.

Available Options:

- Custom ounce weights
- Custom widths available
- Custom colors
- Secondary Backings

(Minimum yardages required. Contact your Lexmark representative for more information.)

Recommended for Moderate (Room) Carpet Traffic Levels.

Carpet should be installed in accordance with the Carpet and Rug Institute's standard CRI-104.

A strategic texture,
Checkmate's fields of color draw on the imagery of the game of chess
with a sequence of moves that are logical, yet curious.



494 Pocket Watch



489 Tea Party



448 Off With Her Head Red



496 Mushrooms



490 Looking Glass



450 Caterpillar



498 Eat Me, Drink Me



488 Cheshire Cat



468 Oh So Alice



418 Queen of Hearts



446 Mad as a Hatter



478 Wonderland



SPECIFICATIONS

Style

STIX

Construction

Tufted Single End Servo Scroll Multi-Level Loop Tip Shear (cut & loop)

Fiber

100% C.F. Lextron Enviro Green Solution Dyed Nylon w/Lexshield® built-in Anti-microbial Protection

Gauge

1/10

Tufted Pile Weight

32oz. Per Square Yard

Finished Pile Height

.312" High .218" Medium .125" Low

Stitches Per Inch

11

Primary Backing

Woven Polypropylene

Secondary Backing

Action Bac®

Dye

Solution Dyed

Total Weight

68oz.

Width

12'

Radiant Panel

Class I

Pattern Repeat

12"x 24"



CRI GREEN LABEL PLUS INDOOR AIR QUALITY TESTING PROGRAM

Passes - Certification Number GLP 2380

Lextron Enviro Green contains 10% pre consumer recycled content.

Available Options:

- Custom ounce weights
- Custom widths available
- Custom colors
- Secondary Backings

(Minimum yardages required. Contact your Lexmark representative for more information.)

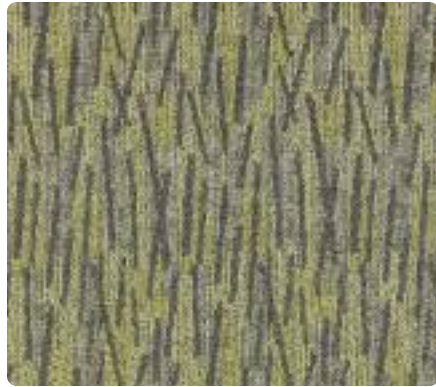
Recommended for Moderate (Room) Carpet Traffic Levels.

Carpet should be installed in accordance with the Carpet and Rug Institute's standard CRI-104.

With contemporary flair,
Stix straddles the line between an exciting texture and a fresh geometric.



268 Midnight



290 Sage



294 Stones



296 Chestnut



286 Copper Patinasm



278 Bluebell



298 Coal



218 Dynamite



289 Hickory

Printed colors may vary from actual carpet colors.



SPECIFICATIONS

Style

MOROCCAN FRETWORK

Construction

Tufted Single End Servo Scroll Multi-Level Loop Tip Shear (cut & loop)

Fiber

100% C.F. Lextron Enviro Green Solution Dyed Nylon w/Lexshield® built-in Anti-microbial Protection

Gauge

1/10

Tufted Pile Weight

32oz. Per Square Yard

Finished Pile Height

.312" High .218" Medium .125" Low

Stitches Per Inch

11

Primary Backing

Woven Polypropylene

Secondary Backing

Action Bac®

Dye

Solution Dyed

Total Weight

68oz.

Width

12'

Radiant Panel

Class I

Pattern Repeat

24"x 24"



CRI GREEN LABEL PLUS INDOOR AIR QUALITY TESTING PROGRAM

Passes - Certification Number GLP 2380

Lextron Enviro Green contains 10% pre consumer recycled content.

Available Options:

- Custom ounce weights
- Custom widths available
- Custom colors
- Secondary Backings

(Minimum yardages required. Contact your Lexmark representative for more information.)

Recommended for Moderate (Room) Carpet Traffic Levels.

Carpet should be installed in accordance with the Carpet and Rug Institute's standard CRI-104.

Moorish architectural details serve as inspiration.

Moroccan Fretwork's traditional motifs are effortlessly transformed into a modern version.



398 Wrought Iron



392 Antique Nickel



389 Burnished Gold



390 Smoke



396 Bronze



318 Relic



348 Molten



358 Moss



399 Steel

Printed colors may vary from actual carpet colors.



SPECIFICATIONS

Style

CACHET

Construction

Tufted Multi-Level Loop Servo Scroll Tip Shear

Fiber

100% C.F. Lextron Enviro Green Solution Dyed Nylon w/Lexshield® built-in Anti-microbial Protection

Gauge

1/10

Tufted Pile Weight

32oz. Per Square Yard

Finished Pile Height

.312" High .218" Medium .125" Low

Stitches Per Inch

12

Primary Backing

Woven Polypropylene

Secondary Backing

Action Bac®

Dye

Solution Dyed

Total Weight

68oz.

Width

12'

Radiant Panel

Class I

Pattern Repeat

12"x 20.5"



CRI GREEN LABEL PLUS INDOOR AIR QUALITY TESTING PROGRAM

Passes - Certification Number GLP 2380

Lextron Enviro Green contains 10% pre consumer recycled content.

Available Options:

- Custom ounce weights
- Custom widths available
- Custom colors
- Secondary Backings

(Minimum yardages required. Contact your Lexmark representative for more information.)

Recommended for Moderate (Room) Carpet Traffic Levels.

Carpet should be installed in accordance with the Carpet and Rug Institute's standard CRI-104.

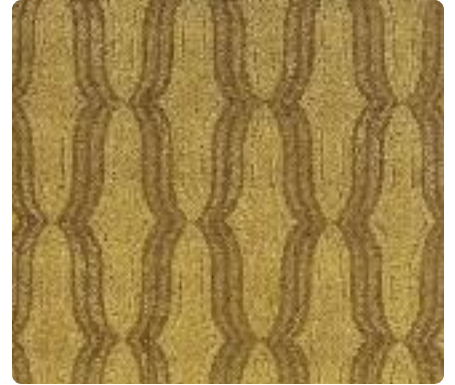
An abstracted hourglass design,
Cachet is reminiscent of the shape created by a woman's corset.



478 Plume



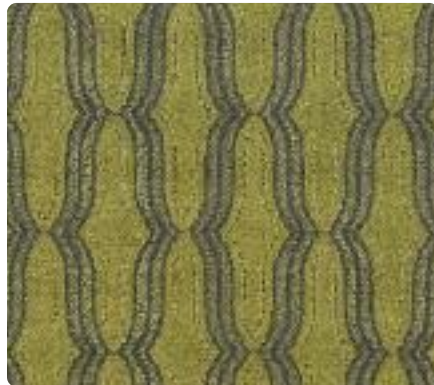
465 Creme de la Creme



486 Proud Pear



468 Best in Show



490 Glitz



496 Academy



498 Emerald Envy

Printed colors may vary from actual carpet colors.



SPECIFICATIONS

Style

CHAMPLAIN

Construction

Tufted Single End Servo Scroll Multi-Level Loop Tip Shear

Fiber

100% C.F. Lextron Enviro Green Solution Dyed Nylon w/ Lexshield® built-in Anti-microbial Protection

Gauge

1/10

Tufted Pile Weight

32oz. Per Square Yard

Finished Pile Height

.312" High .218" Medium .125" Low

Stitches Per Inch

11

Primary Backing

Woven Polypropylene

Secondary Backing

Action Bac®

Dye

Solution Dyed

Total Weight

68oz.

Width

12'

Radiant Panel

Class I

Pattern Repeat

48"x 48"



CRI GREEN LABEL PLUS INDOOR AIR QUALITY TESTING PROGRAM

Passes - Certification Number GLP 2380

Lextron Enviro Green contains 10% pre consumer recycled content.

Available Options:

- Custom ounce weights
- Custom widths available
- Custom colors
- Secondary Backings

(Minimum yardages required. Contact your Lexmark representative for more information.)

Recommended for Moderate (Room) Carpet Traffic Levels.

Carpet should be installed in accordance with the Carpet and Rug Institute's standard CRI-104.

Inspired by the beauty of the autumn season,
Champlain features stylized gently curving leaves of various sizes in an elegant design.



390 Sycamore



394 Silverbell



352 Pacific Pine



355 Olive Branch



386 Chestnut



378 Autumn Purple



388 Colorado Blue Spruce



398 Juniper



387 White Birch

Printed colors may vary from actual carpet colors.



SPECIFICATIONS

Style

MADISON

Construction

Tufted Enhanced Loop Graphic Tip Shear

Fiber

100% C.F. Lextron Enviro Green Solution Dyed Nylon w/ Lexshield® built-in Anti-microbial Protection

Gauge

1/10

Tufted Pile Weight

32oz. Per Square Yard

Finished Pile Height

.250" High .187" Medium .062" Low

Stitches Per Inch

10

Primary Backing

Woven Polypropylene

Secondary Backing

Action Bac®

Dye

Solution Dyed

Total Weight

68oz.

Width

12'

Radiant Panel

Class I

Pattern Repeat

36"x 65"



CRI GREEN LABEL PLUS INDOOR AIR QUALITY TESTING PROGRAM

Passes - Certification Number GLP 2380

Lextron Enviro Green contains 10% pre consumer recycled content.

Available Options:

- Custom ounce weights
- Custom widths available
- Custom colors
- Secondary Backings

(Minimum yardages required. Contact your Lexmark representative for more information.)

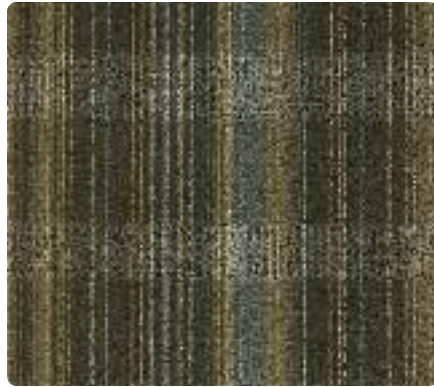
Recommended for Moderate (Room) Carpet Traffic Levels.

Carpet should be installed in accordance with the Carpet and Rug Institute's standard CRI-104.

Urban inspiration & architectural influence
are softened with a watercolor interpretation.
Madison is reminiscent of skyscrapers diffused with clouds.



396 Urban Coffee Break



354 Hudson Blue



386 Bryant Park In Spring



355 Park Avenue Green



394 Subway Token



398 Turtle Pond



318 Big Apple





SPECIFICATIONS

Style

METEORITE

Construction

Tufted Single End Servo Scroll Multi-Level Loop Tip Shear

Fiber

100% C.F. Lextron Enviro Green Solution Dyed Nylon w/ Lexshield® built-in Anti-microbial Protection

Gauge

1/10

Tufted Pile Weight

32oz. Per Square Yard

Finished Pile Height

.312" High .218" Medium .125" Low

Stitches Per Inch

11

Primary Backing

Woven Polypropylene

Secondary Backing

Action Bac®

Dye

Solution Dyed

Total Weight

68oz.

Width

12'

Radiant Panel

Class I

Pattern Repeat

48"x 96"



CRI GREEN LABEL PLUS INDOOR AIR QUALITY TESTING PROGRAM

Passes - Certification Number GLP 2380

Lextron Enviro Green contains 10% pre consumer recycled content.

Available Options:

- Custom ounce weights
- Custom widths available
- Custom colors
- Secondary Backings

(Minimum yardages required. Contact your Lexmark representative for more information.)

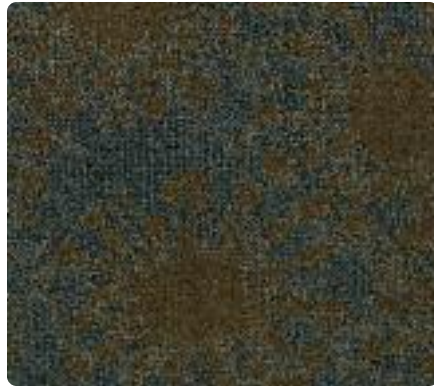
Recommended for Moderate (Room) Carpet Traffic Levels.

Carpet should be installed in accordance with the Carpet and Rug Institute's standard CRI-104.

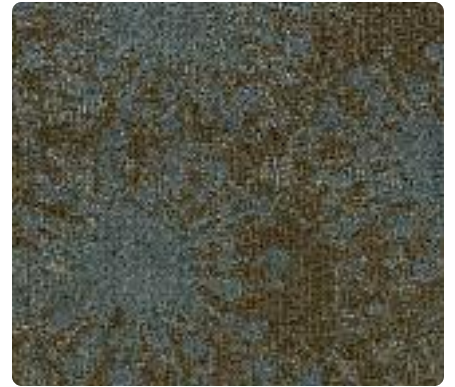
Inspired by Mid-Century Modern design, the stylized starburst motif of **Meteorite** is a chic update to a modern classic. The large-scale celestial pattern, which features smaller starburst layered upon larger ones, has a touch of artistic playfulness.



475 Venus Cloud



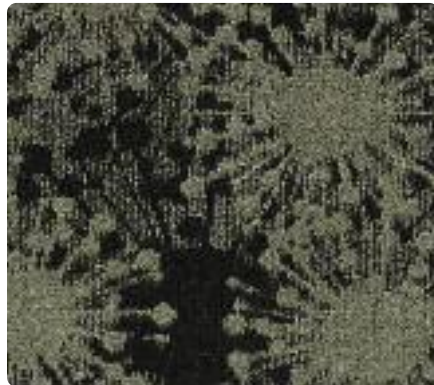
465 Universe



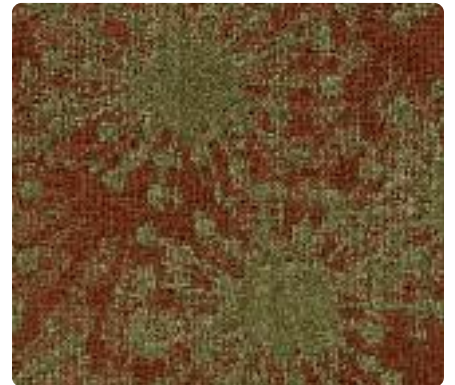
463 Moon Beam



467 Satellite



499 Black Smoke



446 Jupiter



447 Rocket Fuel



487 Sun Shadow



488 Martian

Printed colors may vary from actual carpet colors.



SPECIFICATIONS

Style

SIENA

Construction

Tufted Single End Servo Scroll Multi-Level Loop Tip Shear

Fiber

100% C.F. Lextron Enviro Green Solution Dyed Nylon w/ Lexshield® built-in Anti-microbial Protection

Gauge

1/10

Tufted Pile Weight

32oz. Per Square Yard

Finished Pile Height

.312" High .218" Medium .125" Low

Stitches Per Inch

11

Primary Backing

Woven Polypropylene

Secondary Backing

Action Bac®

Dye

Solution Dyed

Total Weight

68oz.

Width

12'

Radiant Panel

Class I

Pattern Repeat

24"x 24"



CRI GREEN LABEL PLUS INDOOR AIR QUALITY TESTING PROGRAM

Passes - Certification Number GLP 2380

Lextron Enviro Green contains 10% pre consumer recycled content.

Available Options:

- Custom ounce weights
- Custom widths available
- Custom colors
- Secondary Backings

(Minimum yardages required. Contact your Lexmark representative for more information.)

Recommended for Moderate (Room) Carpet Traffic Levels.

Carpet should be installed in accordance with the Carpet and Rug Institute's standard CRI-104.

Evoking the rolling hills of Tuscany, the graceful swirls and curling scrolls of **Siena** are anchored with a crackle and glazed background, adding depth to design. The highly stylized curvilinear lines flow effortlessly, creating a sense of subtle movement.



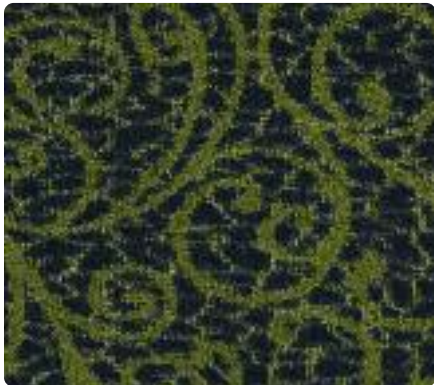
297 Espresso



290 Travertine



286 Tuscan Field



268 Mediterranean Sea



258 Olive Tree



275 Chianti Grape



252 Artichoke



243 Poppy





SPECIFICATIONS

Style

ESSEX

Construction

Tufted Multi-Level Loop Servo Scroll Tip Shear

Fiber

100% C.F. Lextron Enviro Green Solution Dyed Nylon w/ Lexshield® built-in Anti-microbial Protection

Gauge

1/10

Tufted Pile Weight

32 oz. Per Square Yard

Finished Pile Height

.312" High .218" Medium .125" Low

Stitches Per Inch

12

Primary Backing

Woven Polypropylene

Secondary Backing

Action Bac®

Dye

Solution Dyed

Total Weight

68oz.

Width

12' 1"

Radiant Panel

Class I

Pattern Repeat

2.50"x 12"



CRI GREEN LABEL PLUS INDOOR AIR QUALITY TESTING PROGRAM

Passes - Certification Number GLP 2380

Lextron Enviro Green contains 10% pre consumer recycled content.

Available Options:

- Custom ounce weights
- Custom widths available
- Custom colors
- Secondary Backings

(Minimum yardages required. Contact your Lexmark representative for more information.)

Recommended for Moderate (Room) Carpet Traffic Levels.

Carpet should be installed in accordance with the Carpet and Rug Institute's standard CRI-104.

Essex recalls the elegance of Art Deco style through a dynamic and evened repeat of standard and elongated diamonds. Emulating the signature style of Tiffany stained glass, the luxurious weave and jewel-toned hue adds an element of richness and sophistication to the design.



143 Ruby



186 Amber



155 Peridot



165 Turquoise



187 Copper Quartz



198 Crystal Onyx



175 Smokey Amethyst



196 Chocolate Topaz



167 Cobalt

A Green Story

Lexmark Carpet Mills, Inc. is committed to providing an environmentally friendly product to the marketplace. From the nylon chip we use to produce our in-house yarn to the sample folders in our Customer's library, we strive to produce a product that is environmentally friendly.

As we all know, the "Green" movement is and will become a major factor in the way our Customer selects product for projects. Lexmark has taken the steps so LEED points can be garnered using all Lexmark products. The Carpet and Rug Institute has certified all carpets produced by Lexmark Carpet Mills, Inc. as Green Label Plus. This certification process ensures that at least 1 LEED point can be earned when using Lexmark carpet.

Lexmark produces our own Lextron Enviro-Green® Solution Dyed Nylon in-house. The enviro-friendly yarn system uses 10% pre-consumer recycled content. After the carpets life cycle is completed, the carpet fiber can be recycled again.

Lexshield is Lexmark's proprietary anti-microbial protection. Lexshield is added during the extrusion process and is built into the fiber. Unlike topical treatments, Lexshield will not wear or wash off. Lexshield is also enviro-friendly and is made from crab shells, which are hypo-allergenic, bio-degradable, contain no harsh chemicals or heavy metals.



STYLE #	STYLE NAME	# OF COLORS	TUFTED YARN WEIGHT	CONSTRUCTION	YARN TYPE	DENSITY	GAUGE	PER INCH	TOTAL WEIGHT	FINISHED PILE HEIGHT	RADIANT PANEL
SG100	Essex	9	32 oz.	Multi-Level Loop Servo Scroll Tip Shear	Lextron Enviro-Green® CF SD Nylon w/Lexshield®	5962	1/10	12	68 oz.	.312 High / .218 Med. / .125 Low	I
SG250	Siena	8	32 oz.	Single End Servo Scroll Multi-Level Loop Tip Shear	Lextron Enviro-Green® CF SD Nylon w/Lexshield®	5962	1/10	11	68 oz.	.312 High / .218 Med. / .125 Low	I
SG300	Madison	7	32 oz.	Enhanced Loop Graphic Tip Shear	Lextron Enviro-Green® CF SD Nylon w/Lexshield®	5992	1/10	10	68 oz.	.250 High / .187 Med. / .062 Low	I
SG375	Champlain	9	32 oz.	Single End Servo Scroll Multi-Level Loop Tip Shear	Lextron Enviro-Green® CF SD Nylon w/Lexshield®	5962	1/10	11	68 oz.	.312 High / .218 Med. / .125 Low	I
SG400	Cachet	7	32 oz.	Multi-Level Loop Servo Scroll Tip Shear	Lextron Enviro-Green® CF SD Nylon w/Lexshield®	5962	1/10	12	68 oz.	.312 High / .218 Med. / .125 Low	I
SG425	Moroccan Fretwork	9	32 oz.	Single End Servo Scroll Multi-Level Loop Tip Shear	Lextron Enviro-Green® CF SD Nylon w/Lexshield®	5962	1/10	11	68 oz.	.312 High / .218 Med. / .125 Low	I
SG450	Meteroite	9	32 oz.	Single End Servo Scroll Multi-Level Loop Tip Shear	Lextron Enviro-Green® CF SD Nylon w/Lexshield®	5962	1/10	11	68 oz.	.312 High / .218 Med. / .125 Low	I
SG475	Slix	9	32 oz.	Single End Servo Scroll Multi-Level Loop Tip Shear	Lextron Enviro-Green® CF SD Nylon w/Lexshield®	5962	1/10	11	68 oz.	.312 High / .218 Med. / .125 Low	I
SG325	Checkmate	13	32 oz.	Tufted Enhanced Loop Graphic Tip Shear	Lextron Enviro-Green® CF SD Nylon w/Lexshield®	5992	1/10	12	68 oz.	.250 High / .187 Med. / .062 Low	I
For Customized Products											
Ordered Yardage Maximum Coverage											
500 - 1000 20%											
1001 - 2000 10%											
2001 - 5000 5%											
over - 5000 3%											
*738s Recommended for Borders, Cove Base, Caps and Fill only.											
NOTE: All the products above can be dialed up to heavier weights to meet heavier standards. Standard width is 12 feet on most of the above running line. Special widths are available, inquire for price and minimums. There may be a set-up charge based on yardage (which is usually off-set by the savings in seaming cost).											



Inspiration through Collaboration

www.lexmarkcarpet.com

800.871.3211